


## Human CD40L Protein, His tag (Animal-Free)

Cat #: PRP1920

Size: 5 µg/20 µg/100 µg/1 mg

### Product Information

	<b>Product Name:</b> Human CD40L Protein, His tag (Animal-Free)		
<b>REF</b>	<b>Catalog Number:</b> PRP1920	<b>LOT</b>	<b>Lot Number:</b> Refer to product label
	<b>Purity:</b> > 95 % as determined by SDS-PAGE		
	<b>Storage:</b> Store at -20°C		<b>Preparation method:</b> E.coli
	<b>Shipping:</b> The product is shipped at ambient temperature.		

**Background:** Human CD40L (CD154) is one member of TNF family which is expressed on T cells. It binds the CD40, which is on the antigen-presenting cells (ex: B cells, macrophages and monocytes). Human CD40L is a 21.6 kDa cytokine with 103 amino acid residues which is a transmembrane glycoprotein. Human CD40L plays an important role in the adaptive immune system which induces the B cell maturation and activation.

**Sequence:** Amino acid sequence derived from Human CD40L (Met113-Leu261) (P29965) was expressed with 6×His tag at the C-terminus.

**Protein length:** The recombinant Human CD40L consists of 149 amino acids and predicts a molecular mass of 17 kDa.

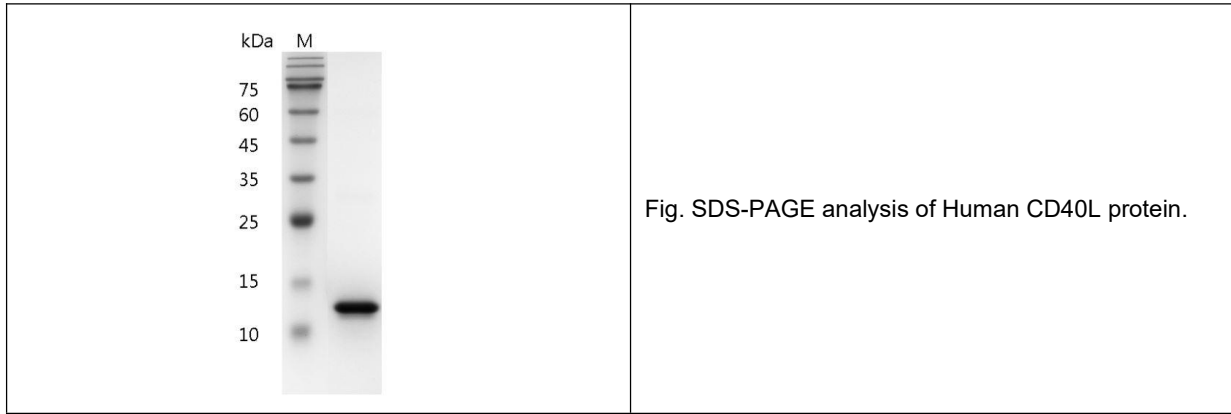
**Biological Activity:** Measure by its ability to induce IL-8 secretion in human PBMCs. The ED<sub>50</sub> for this effect is < 5 ng/mL.

**Endotoxin:** <0.1 EU per 1 µg of the protein by the LAL method.

**Formulation:** Lyophilized from PBS, pH 8.0.

**Storage Instructions:** Lyophilized protein product should be stored desiccated below -18°C. Upon reconstitution, the protein should be stored at 4°C between 2-7 days and for future use below -18°C. For long term storage it is recommended to add a carrier protein (5% HSA, 10%FBS or 0.1%BSA). Please prevent freeze-thaw cycles.

**Usage notes:** Always centrifuge tubes before opening. It is recommended to reconstitute the lyophilized recombinant protein to a concentration of 0.1-1 mg/mL using the buffer we provided, and keep at room temperature for at least 20 min to fully dissolve. Please avoid vortex vigorously.



**Note:** The product listed herein is for research use only and is not intended for use in human or clinical diagnosis. Suggested applications of our products are not recommendations to use our products in violation of any patent or as a license. We cannot be responsible for patent infringements or other violations that may occur with the use of this product.